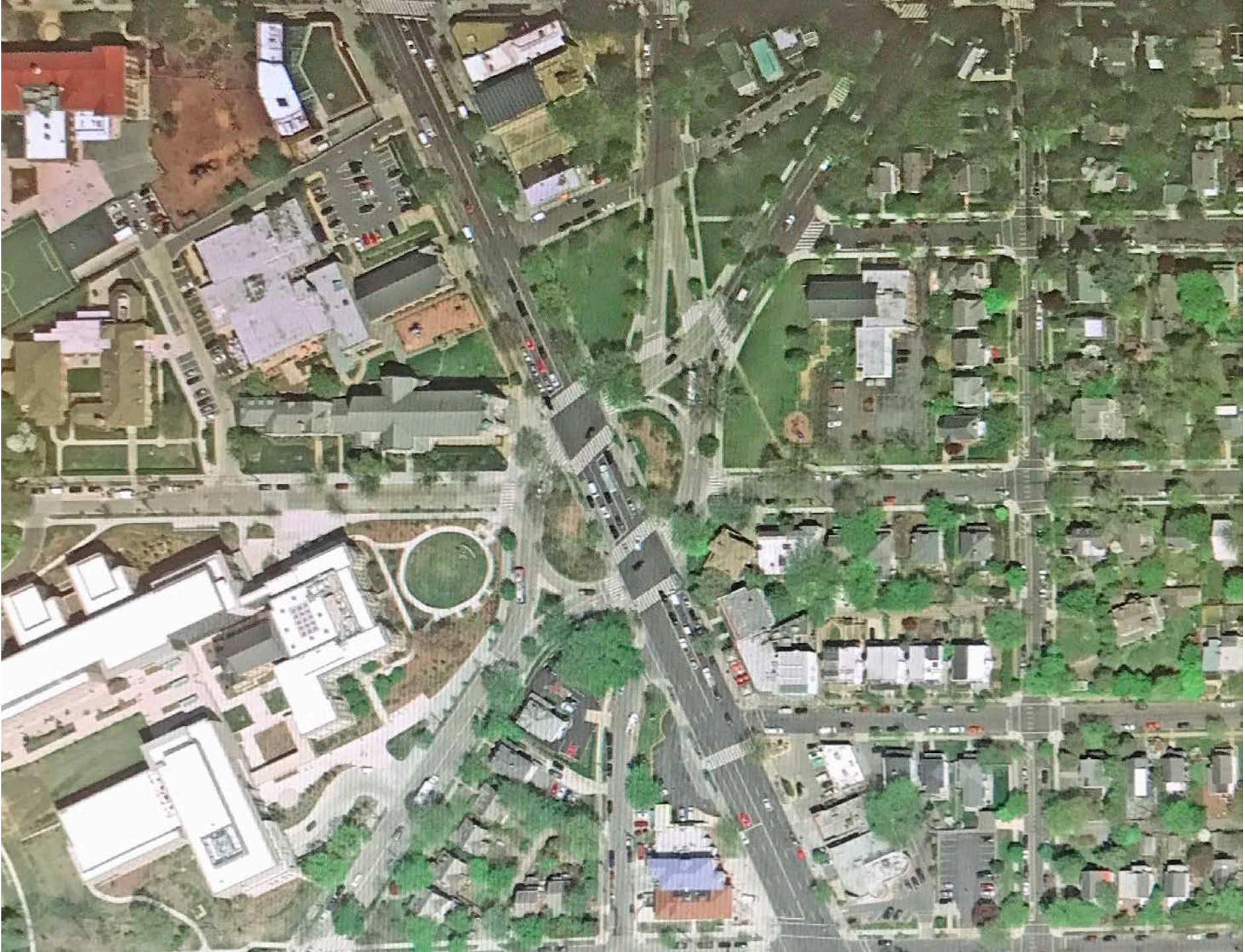


Don Hawkins, Architect

Slides Shown at 11/14/18 public hearing

BZA Case # 19823





10
5500sf

11

12

13

810
6854sf

4

3

2

1
5500sf



33,640sf

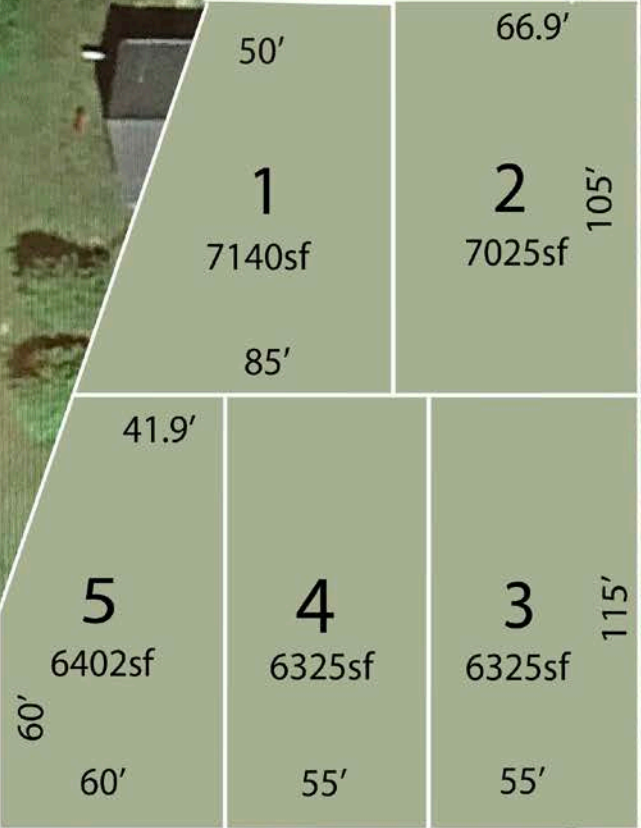
3520sf

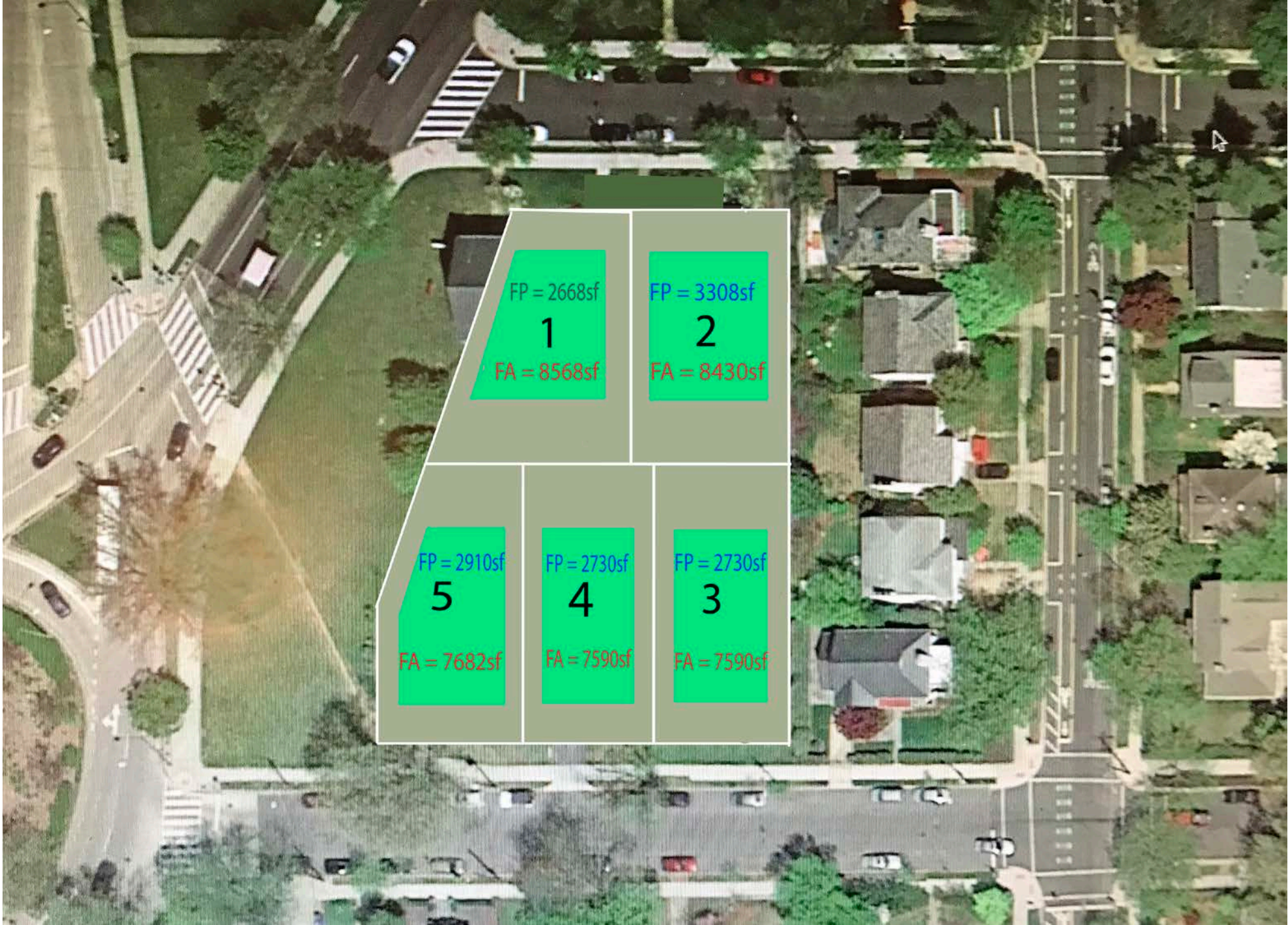
3520sf

3520sf

3520sf

3520sf





FP = 2668sf

1

FA = 8568sf

FP = 3308sf

2

FA = 8430sf

FP = 2910sf

5

FA = 7682sf

FP = 2730sf

4

FA = 7590sf

FP = 2730sf

3

FA = 7590sf



1
\$1,428,000

2
\$1,405,000

5
\$1,280,400

4
1,265,000

3
\$1,265,000